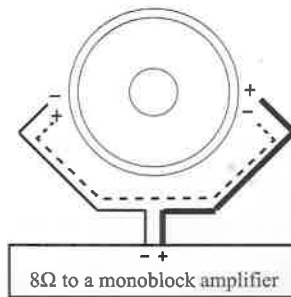
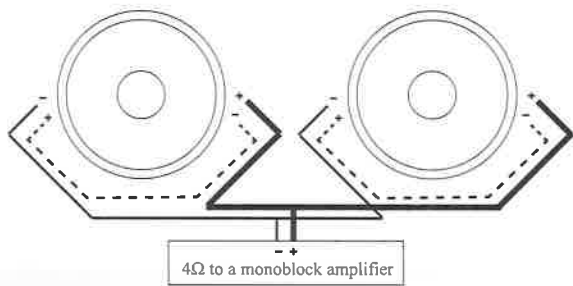
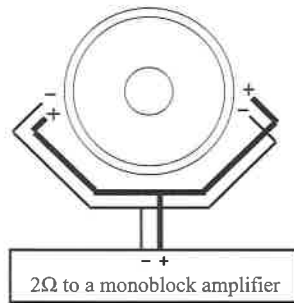
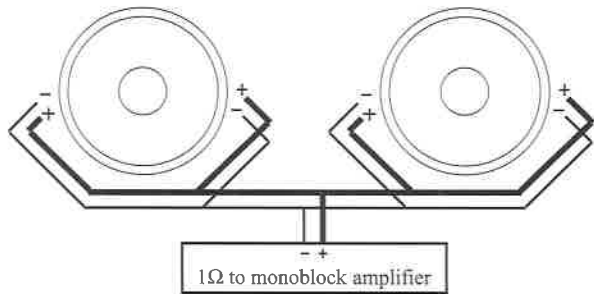
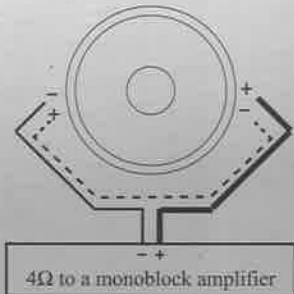
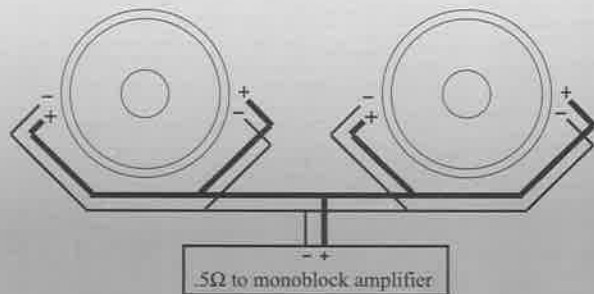
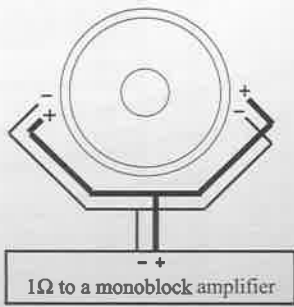
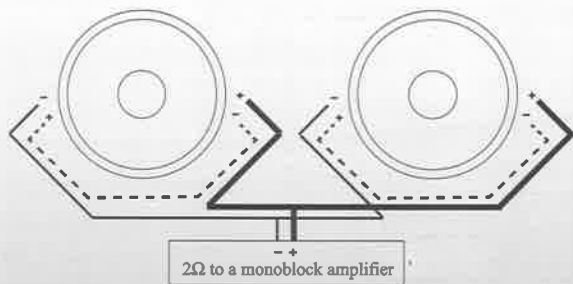


MOFOS-104/124



MOFOS-102/122



2017

MOFO

Type S

SUBWOOFER



Thank you for choosing Power Acoustik woofers. Designed and engineered in the USA, this product combines innovative technology with the finest materials to consistently deliver Absolutely State of the Art performance, sound quality, reliability, and value. This Power Acoustik product reflects our commitment to offer you unparalleled performance and quality for years of dependable service and listening enjoyment.

Features, Parameters, & Dimensions

- Optimized Motor Structure Effectively Targets Magnetic Strength
- 10mm T-Yoke & Top Plate Improve Low Frequency Dynamics
- Vented T-Yoke & Frame Reduces Voice Coil Heat Build-up
- Die Cast Aluminum Heatsink Dust Cap Absorbs Voice Coil Heat
- Aluminum Dust Cap Fins Dissipate Heat & Strengthen Cone
- 2.5" 4-Layer Voice Coil w/ Large Gauge Wire Increases Power Handling
- High-Temperature Tolerance Adhesives Resist Thermal Failure
- Nickel Plated 8ga Spring-Loaded Compression Wire Terminals
- Non-Transfer Spruce Pulp Cone w/ UV & Chemical Protection
- High Density Polyether Foam Surround w/ UV & Chemical Protection
- Dual Poly-Cotton Suspension Dampen Violent Accelerations
- Stitched Voice Coil Leads Prevent Potential Damage
- 1-pc Gasket/Trim Ring w/ Concealed Mounting Holes Included

Specifications	MOFOS-102	MOFOS-104	MOFOS-122	MOFOS-124
Re	3.840Ω	7.240Ω	3.850Ω	7.230Ω
Fs	28.87Hz	30.31Hz	27.38Hz	28.60Hz
Qes	0.520	0.590	0.383	0.416
Qms	4.800	4.780	5.443	4.722
Qts	0.470	0.530	0.357	0.383
Diameter	10"	10"	12"	12"
Vas	1.00ft ³	0.88ft ³	1.55ft ³	1.69ft ³
Bl	15.63tm	20.98tm	20.13tm	24.55tm
Mms	182.99g	185.37g	219.677g	200.815g
Cms	166.68	146.46	138.664	152.013
Sen	83.02db	82.60db	86.35db	86.56db
MAX Power	2,200w	2,200w	2,500w	2,500w
RMS Power	1,100w	1,100w	1,200w	1,200w
Cutout Diameter	9.25"	9.25"	11"	11"
Mount Depth	5.50"	5.50"	6.25"	6.25"
Weight	14.6lbs.	14.6lbs.	16lbs.	16lbs.

Enclosure Dimensions

Included in this manual are a number of different enclosure suggestions. These are by no means the only enclosures to use, but they provide a starting point to determine the correct enclosure for your needs many factors must be addressed (amount of power, vehicle, placement, crossovers, etc) Therefore, as always, Power Acoustik recommends that your subwoofer be installed by an authorized Power Acoustik dealer.

Enclosure Construction

All enclosures should be made of .75" (3/4") material only. When possible, make the baffle 1.5" (1 1/2) thick and add .75" (3/4") to the depth of the enclosure to compensate. All volumes INCLUDE vent/port and subwoofer displacements. DO NOT change the volume unless you plan on adding a substantial amount of bracing. For added performance, applying a coat of fiberglass resin to the interior walls will greatly improve sealing the enclosure. Adding a thin layer of poly-fill will improve response by smoothing out reflections within the enclosure.

Enclosure Recommendations

Sealed	MOFOS-10	MOFOS-12
Min	.075 ft ³	1.25 cu ft
Optimum	1.00 ft ³	1.50 cu ft
Ported	MOFOS-10	MOFOS-12
Min	1.50 ft ³	2.00 cu ft
Port WxL	3" x 11.75"	4" x 11"
Tuning	32 Hz	34 Hz
Opt	1.75 ft ³	2.50 cu ft
Port WxL	3" x 11"	4" x 13.75"
Tuning	30Hz	30Hz